

GROWING HOME

Cooling Our Neighbourhoods

What is an Urban Heat Island?

Our suburbs are full of roofs and roads, significantly more heat gets trapped and retained in these surfaces causing hot days and even hotter nights than in surrounding areas.

Impermeable Surfaces in Brimbank



60%

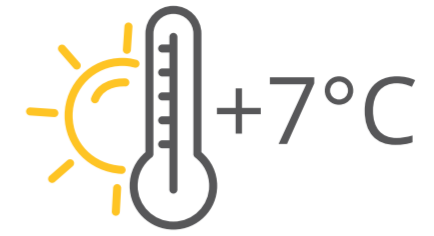
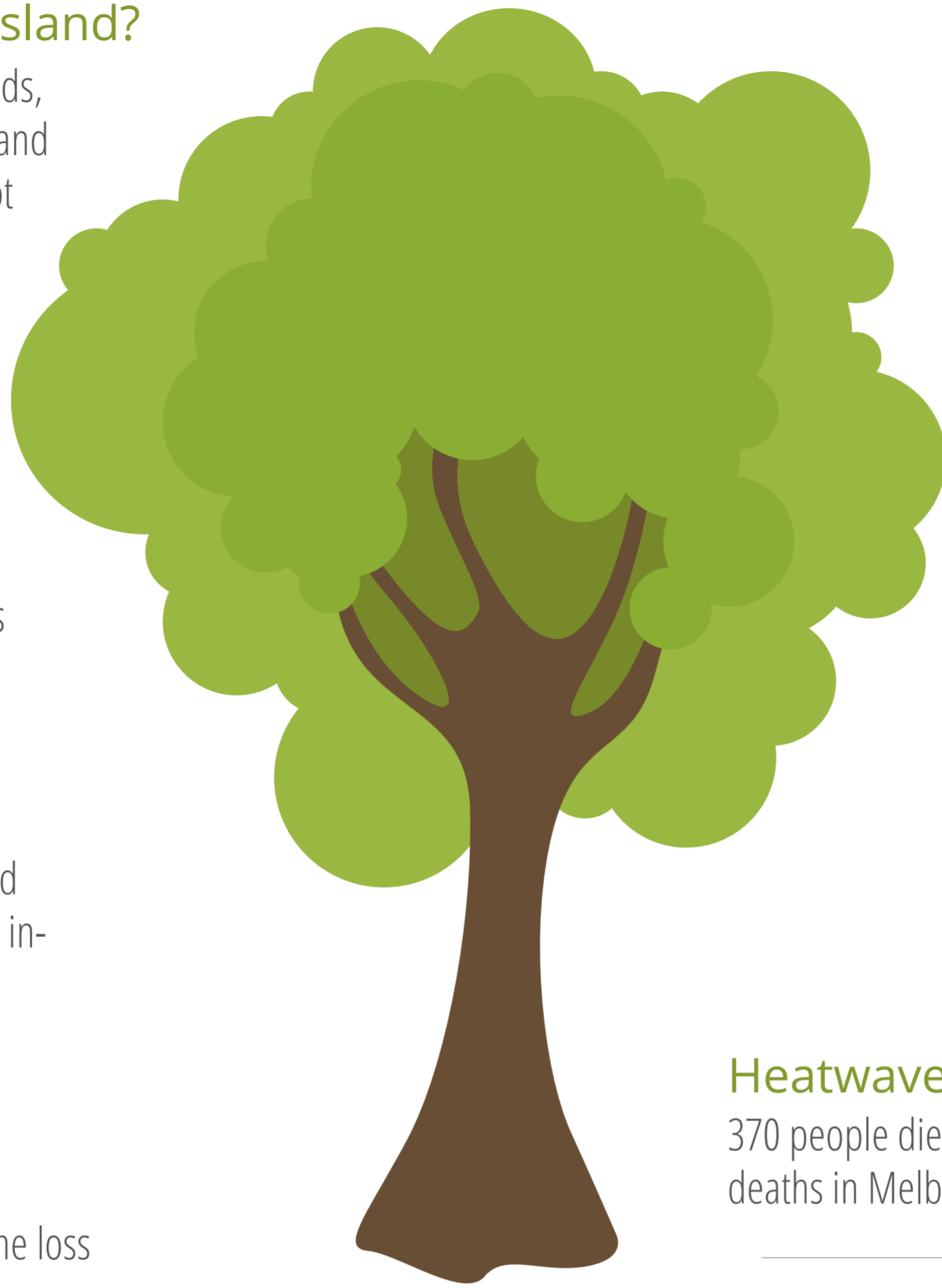
Roads, roofs & carparks

Suburb Infill

Is leading to loss of trees, shrubs and green spaces in our suburbs and an increase in impervious surfaces.



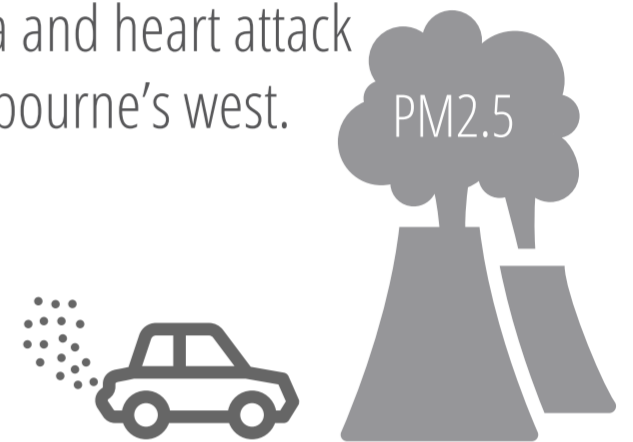
Urban development that results in the loss of trees and vegetation causes average temperatures to increase in these areas. As our suburbs are developed, they get hotter.



Brimbank is the most vulnerable municipality in Greater Melbourne to heat island effect with temperatures up to 7°C hotter than surrounding areas.

Air Pollution

High levels of air pollution are responsible for increased rates of asthma and heart attack in Melbourne's west.



Heatwaves are deadly

370 people died due to the 2019 heatwave with most deaths in Melbourne's west and north.



10% Canopy Coverage in Brimbank compared with 30% in Melbourne's East.

Benefits of Trees

COOLER

Free Airconditioning

Cooling from young healthy tree is equivalent to 10 room-sized airconditioners



Shading

Strategic placement of trees in urban areas can cool the air by between 2 °C and 8 °C.



Evapotranspiration

On hot days, trees convert heat and CO2 into water that cools the surrounding area.

CLEANER

Less Air Pollution

One large tree can remove 27kg of pollutants from the air in a single year. Trees reduce dust and pollution – helping those with issues such as asthma and heart disease.

Cleaner Waterways

Trees and shrubs reduce the risks of flash flooding and filter heavy metals and other pollutants from stormwater entering creeks.



GREENER

Save on Energy Costs

Trees reduce winter energy costs by reducing winds - 25% of heat loss in winter is due to drafts.

Growing Home: Cooling Our Neighbourhoods

Join the Growing Home project to get free trees and plants to start reducing heat in your neighbourhood!

Register your interest: scan the code or email us



Supported by Lord Mayor's Charitable Foundation and Brimbank City Council

Kororoit Creek Neighbourhood House | www.kcnh.org.au | coordinator@kcnh.org.au